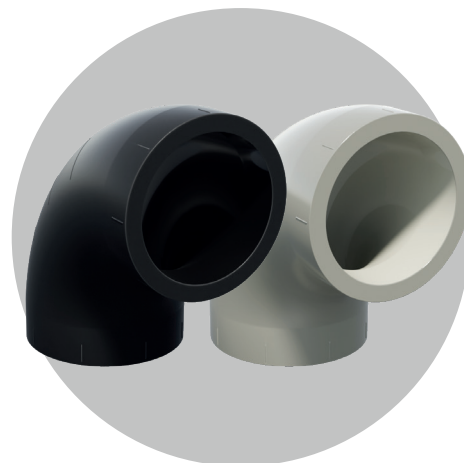




Casella, 20 July 2023

Subj: New bends GKM-GKE



Dear Colleagues,

We are pleased to announce you the availability of **the new FIP branded PP-H and PE100-RC 90° short spigot bends.**

The current feasible range is from d20 up to d110 SDR 11 and SDR 17/17,6, both in PP-H and PE100-RC.

Bends have been **re-engineered**, the main key selling points are:

1 Easier installation:

- Longer spigot grants a better and easier clamping with current butt-welding machine and gives the possibility of carrying out an Infra-Red welding too
- Constant thickness along all the fitting length and marks at 30°, 45°, 60° to meet custom installation needs
- 8 orientation lines on the spigots to support performing a correct welding

2 Same face to face:

- No changes on face-to-face dimension from d32 up to d110 compared to previous bends to avoid skid design updates nor packaging variation; d20 and d25 have a slight variation in face-to-face dimensions (7 mm and 5 mm respectively)

3 High quality:

- Wide range of certifications and approvals
- Smooth internal surface to minimize impurities sedimentation



These new bends will be available starting from **November**.

Following the division in two different stocks and logistic HUBs for PP and PE fittings, we would like to remind you that:

- **FIP PP-H bends** should be ordered from Casella HUB with **FIP codes**
- **FIP PE100-RC bends** should be ordered from Mannheim HUB with **Mannheim codes**

The new codes and dimensions are the following:

PP-H						PE 100-RC					
Casella ref. Code	SDR	d	l	r	Z	Mannheim ref. Code	SDR	d	l	r	Z
GKM17050	17,6	50	23	36	62	110594517	17	50	23	36	62
GKM17063	17,6	63	21	65	77	110694517	17	63	21	65	77
GKM17075	17,6	75	21	75	85	110794517	17	75	21	75	85
GKM17090	17,6	90	22	90	100	110994517	17	90	22	90	100
GKM17110	17,6	110	25	110	120	111194517	17	110	25	110	120
GKM11020	11	20	20	18	34	110194511	11	20	20	18	34
GKM11025	11	25	20	18	37	110294511	11	25	20	18	37
GKM11032	11	32	21	20	40	110394511	11	32	21	20	40
GKM11040	11	40	22	35	51	110494511	11	40	22	35	51
GKM11050	11	50	23	36	62	110594511	11	50	23	36	62
GKM11063	11	63	21	65	77	110694511	11	63	21	65	77
GKM11075	11	75	21	75	85	110794511	11	75	21	75	85
GKM11090	11	90	22	90	100	110994511	11	90	22	90	100
GKM11110	11	110	25	110	120	111194511	11	110	25	110	120

To better show all the features of the new fittings and to support the promotion activities of this new product to customers, we prepared the following marketing collaterals:

- **Tutorial videos:** clear render animations that summarizes all the technical features and unique selling points of the new fittings. Since in Industrial range we have different applications and Customers according to the material used, two different videos have been realized: one is fully dedicated to PP-H fitting, the other one to PE-RC item.

[NEW FIP PE PRESSURE 90° BENDS](#)

[NEW FIP PP H PRESSURE 90° BENDS](#)

- **New PP-H Industrial system catalogue:** this new catalogue contains the new complete and updated range in terms of items and dimensions.

The PDF file as well as InDesign pack are available on Kadanza website for local printing and translation.

[KADANZA PDF FILE](#)

[KADANZA INDESIGN PACK](#)

- **New PE Industrial system catalogue:** this new catalogue contains the new complete and updated range in terms of items and dimensions.

The PDF file as well as InDesign pack are available on Kadanza website for local printing and translation.

[KADANZA PDF FILE](#)

[KADANZA INDESIGN PACK](#)



- **Traceparts:** Range, dimensions and 3D drawing library of PP-H fittings have been implemented on traceparts website.

[3D DRAWING LIBRARY](#)

For any further information you may need, please contact me at glecchi@aliaxis.com.

Best regards,

EMEA Polyolefins Product Manager

EMEA Category Manager industrial Piping

Giulia Lecchi


Luca Palman
