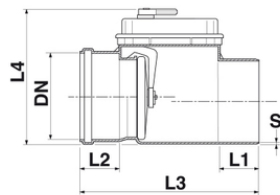
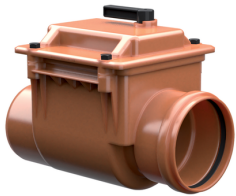


CLASSICA valvola antiriflusso O-Ring piattello INOX Ø160

Guarnizione labbro normale

Certificate presso l'Istituto LGA, secondo la norma europea EN 13564, marcate CE secondo la norma europea EN 13564-1.



Codice	DN (mm)	S (mm)	L1 (mm)	L2 (mm)	L3 (mm)	L4 (mm)	RAL	Piattello	Piattello Inox
1551791	160	4,0	74	74	337	255	RAL 8023	TYPE 1	INOX