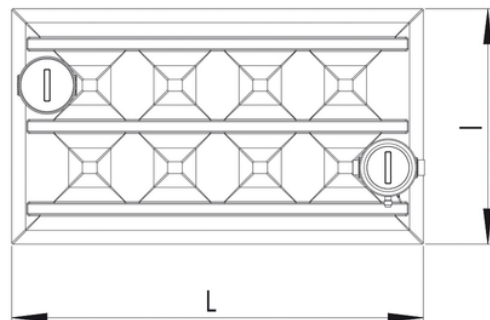
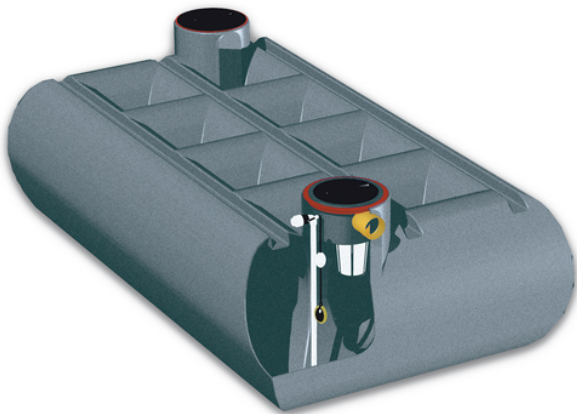


# IRRIGA FLAT, impianto per uso irriguo Base



Codice	Altezza H (cm)	Potenza (W)	Volume (l)	I (cm)	L (cm)	Tensione (V)	Coperchi n°	Articolo
IS05003	120	0,9 (kW)	5.000	200	350	220	2x(400x400)	IRRIGA FLAT 5000
IS05031	120	0,9 (kW)	10.000	420	350	220	4x(400x400)	IRRIGA FLAT 10000