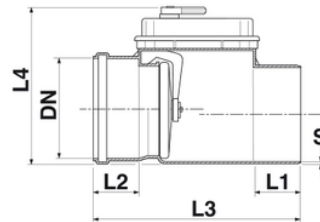
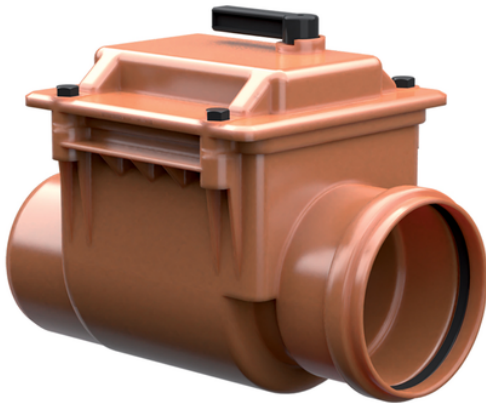


CLASSICA valvola antiriflusso O-Ring Ø100-110-125

Guarnizione labbro normale

Certificate presso l'Istituto LGA, secondo la norma europea EN 13564, marcate CE secondo la norma europea EN 13564-1.



Codice	DN (mm)	S (mm)	L1 (mm)	L2 (mm)	L3 (mm)	L4 (mm)	RAL	Piattello
1555052	100	4,0	58	56	300	230	RAL 8023	TYPE 1
1555551	110	4,0	61	61	307	230	RAL 8023	TYPE 1
1556051	125	4,0	68	65	318	230	RAL 8023	TYPE 1