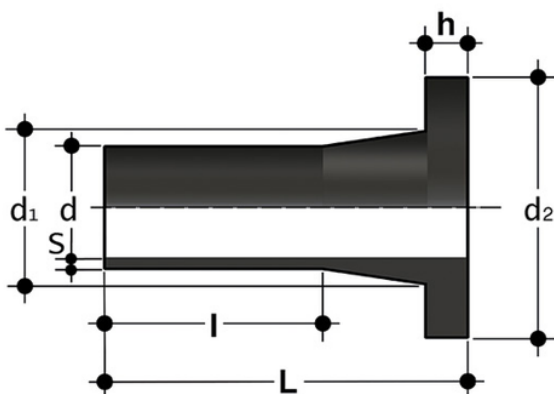


QDE SDR17 - Stub flange

Stub flange, long spigot, for butt welding for ISO/DIN backing rings SDR 17 - S 8.



Codice	d	h	l	d ₁	d ₂	L	S	g
QDE17050	*50	12	62	60	88	90	3,0	106
QDE17063	*63	14	70	75	102	106	3,8	173
QDE17075	*75	16	90	89	122	125	4,5	260
QDE17090	*90	17	100	105	138	140	5,4	379
QDE17110	*110	18	113	125	158	158	6,6	575
QDE17125	*125	18	122	132	158	170	7,4	675
QDE17140	*140	18	130	153	188	173	8,3	860
QDE17160	*160	18	160	175	212	208	9,5	1320
QDE17180	*180	20	140	186	212	200	10,7	1300
QDE17200	*200	24	133	232	268	199	11,9	2170
QDE17225	*225	24	135	235	268	201	13,4	2260
QDE17250	*250	25	148	285	320	220	14,8	3620
QDE17280	*280	25	154	291	320	230	16,6	3810
QDE17315	*315	25	166	335	370	242	18,7	5230
QDE17355	*355	30	179	373	430	261	21,1	7420
QDE17400	*400	33	195	427	482	290	23,7	10460
QDE17450	*450	46	225	515	585	335	26,7	18670
QDE17500	*500	46	240	532	585	350	29,7	19780
QDE17560	*560	50	250	616	685	370	33,2	26940
QDE17630	*630	50	270	644	685	390	37,4	30360



QDE SDR17 - Stub flange

Codice	d	h	l	d ₁	d ₂	L	S	g
QDE17710	*710	50	280	737	800	380	42,1	46000
QDE17800	*800	52	294	840	905	396	47,4	70000

QDE SDR17 – Stub flange

- Size range: d 12 ÷ d 800 (mm)
- Nominal pressure: SDR 17 (PN10) with water at 20 °C, SDR 11 (PN16) with water at 20 °C
- Temperature range: -40 °C ÷ 60 °C
- Coupling standards – Reference standards:
 - Welding: EN ISO 15494. Can be coupled to pipes according to EN ISO 15494
 - Flanging system: ISO 7005-1, EN 1092-1, EN ISO 15494, ANSI B16.5 cl.150
 - Construction criteria: UNI EN ISO 15494
 - Test methods and requirements: UNI EN ISO 15494
 - Installation criteria: DVS 2202-1, DVS 2207-1, UNI EN 12201- 3, UNI 10520, ISO 21307, UNI 10521, UNI EN 1555-3, ISO 4427- 3, ISO 4437-3
- Fitting material: PE-HD
- Seal material: EPDM, FKM