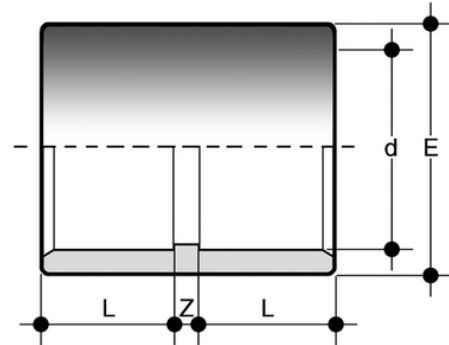
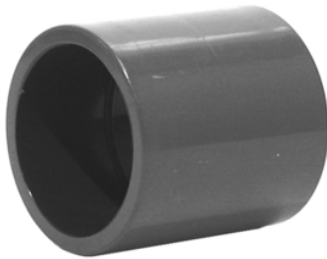


MIC

Solvent weld double socket.



Reference	d	PN	E	L	Z	g
MIC016	16	16	22	14	3	9
MIC020	20	16	27	16	3	11
MIC025	25	16	33	19	3	21
MIC032	32	16	41	22	3	31
MIC040	40	16	50	26	3	58
MIC050	50	16	61	31	3	90
MIC063	63	16	75	38	3	160
MIC075	75	16	89	44	3	260
MIC090	90	16	108	51	5	465
MIC110	110	16	130	61	9	750
MIC160	160	16	186	86	9	1820
MIC225	225	10	260	119	11	5360