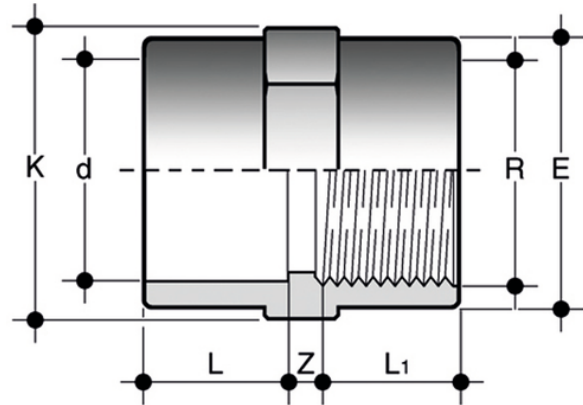
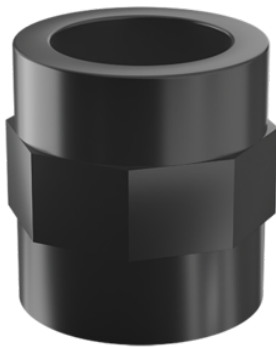


# MLFV

Double socket with solvent weld socket d and BSP threaded female end R.



Reference	d x R	PN	Class	E	K	L	L <sub>1</sub>	Z	g
MLFV012	1/2" x 1/2"	15	E	27	24	16	15	4	15
MLFV034	3/4" x 3/4"	15	E	33	29	19,5	16,3	5,2	25
MLFV100	1" x 1"	15	E	41	35	22,5	19,1	4,5	45
MLFV114	1"1/4 x 1"1/4	15	E	50	43	27	21,4	4	65
MLFV112	1"1/2 x 1"1/2	15	E	61	50	30	21,4	8	100
MLFV200	2" x 2"	15	E	76	61	36	25,7	9	160
DIFV090075212	2"1/2 x 2"1/2	12	E	90	76	44	30,2	17,8	260
MLFV300	3" x 3"	12	D	108	108	51	33,3	22,7	449