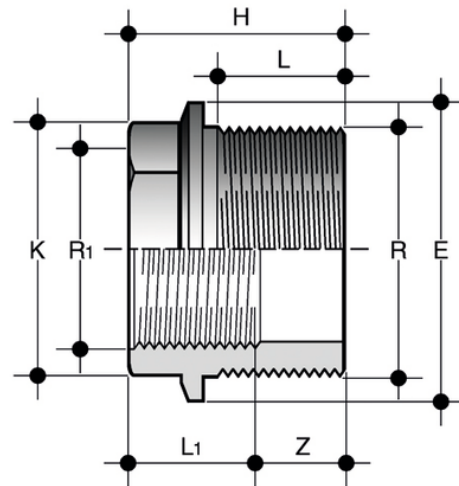


# DFV

Reducing bush with BSP threaded male end (R) and BSP threaded female end (R1 reduced).



Reference	R x R[5:1]	PN	E	H	K	L	L <sub>1</sub>	Z	g
DFV012038	1/2" x 3/8"	16	28	24	23	11,4	15	12,6	7
DFV034012	3/4" x 1/2"	16	34	26,5	28	15	16,3	11,5	9
DFV100034	1" x 3/4"	16	40	30,5	35	16,3	19,10	14,2	17
DFV114100	1"1/4 x 1"	16	52	34	44	19,1	21,4	14,9	30
DFV112114	1"1/2 x 1"1/4	16	58	35	51	21,4	21,4	13,6	30
DFV200112	2" x 1"1/2	16	70	40	64	21,4	25,7	18,6	72