

RFV

Reducer with BSP threaded male end (R) and BSP threaded female end (R1 reduced) (fig. B).

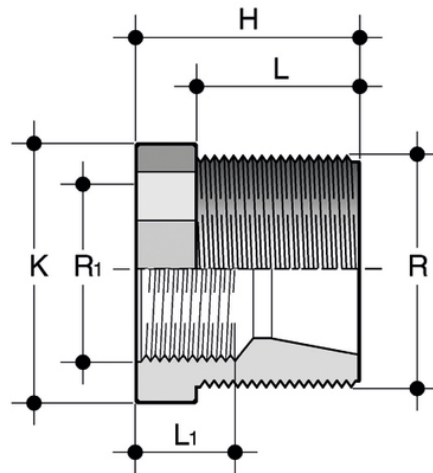
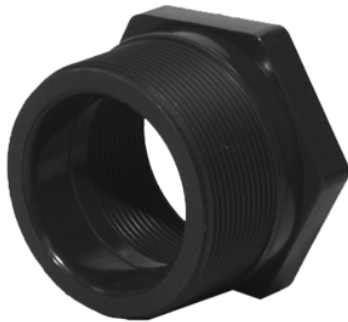


Fig. B

Reference	R x R[5:1]	PN	E	H	K	L	L ₁	g
RFV212200	2"1/2 x 2"	16	-	56	80	30,2	25,7	155
RFV300200	3" x 2"	16	-	66	93	33,3	25,7	185
RFV300212	3" x 2"1/2	16	-	66	93	33,3	30,2	200
RFV400300	4" x 3"	16	-	79	118	39,3	33,3	500