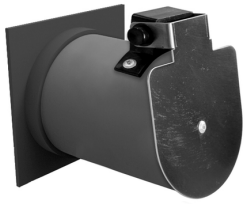


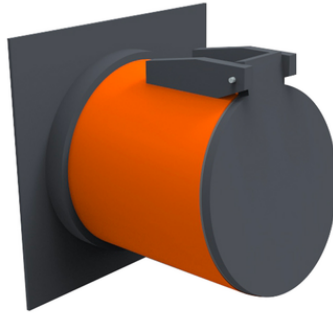
Flap valve Flange

The flap valves allow the waste water to flow out from a pipe to either a ditch or a pond, preventing back flooding at the same time. The flap is opened by waste water's thrust. Flap's weight and 11° slant keep the device closed when not working.

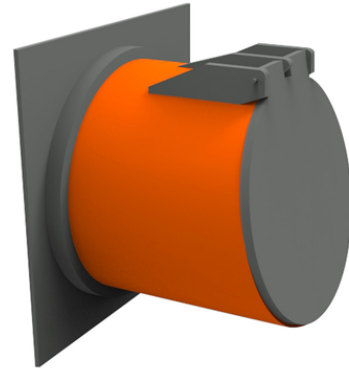
TYPE A (INOX)



TYPE B



TYPE C



Reference	Colour	DN (mm)	H (mm)	DN1 (mm)	S (mm)	L (mm)	α	RAL	Flaps	Design
P551002	Grey	110	140	195x195	5	145	11°	RAL 7037	INOX	TYPE A
P551202	Grey	125	155	195x195	5	165	11°	RAL 7037	INOX	TYPE A
P551602	Grey	160	190	195x195	5	180	11°	RAL 7037	INOX	TYPE A
P552002	Grey	200	230	234x234	5	205	11°	RAL 7037	INOX	TYPE A
P552501	Red	250	280	320x320	5	260	11°	RAL 8023	-	TYPE B
P553001	Red	315	350	370x370	6	300	11°	RAL 8023	-	TYPE B
P554001	Red	400	430	480x480	8	350	11°	RAL 8023	-	TYPE C
P555001	Red	500	530	600x600	10	400	11°	RAL 8023	-	TYPE C
P556301	Red	630	660	730x730	12	500	11°	RAL 8023	-	TYPE C