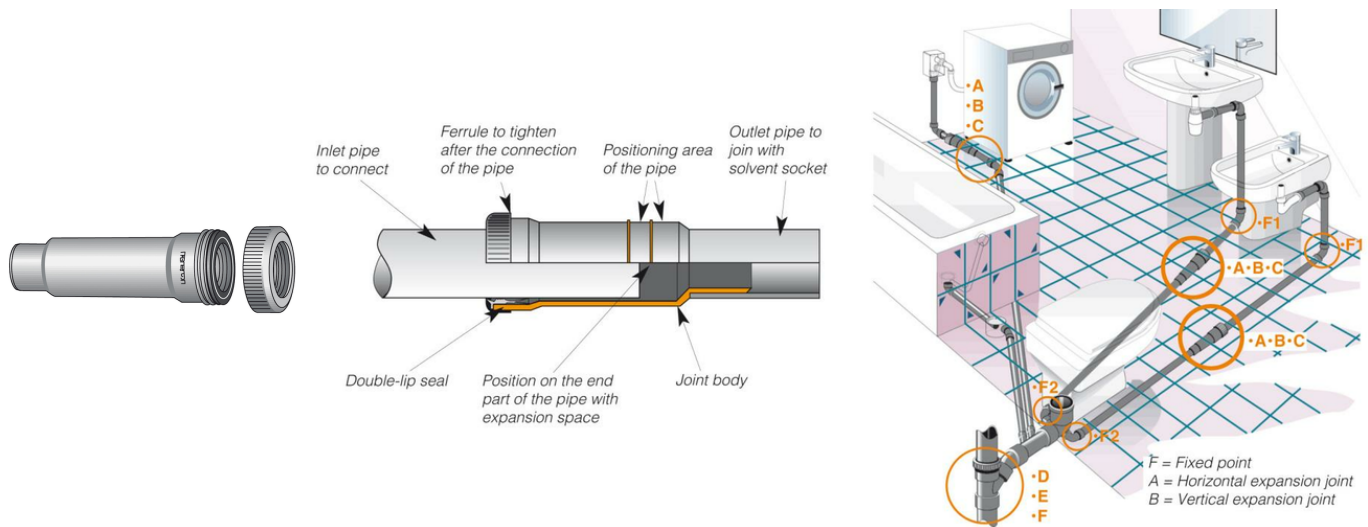


# Expansion joint – horizontal M/F

- EN 1329 Solvent Welded PVC-U Fittings
- B s2 d0 Fire Reaction Euroclass
- Color: RAL 7037 Grey

In branches or bends, the most correct technical solution is inserting a horizontal expansion joint into the piping whenever the section between two fixed points is higher than 2÷3 m, and always when connecting washing-machines, dishwashers and kitchen sinks.



| Reference | DN (mm) | Version      |
|-----------|---------|--------------|
| 1290302   | 32      | -            |
| 1290402   | 40      | -            |
| 1290502   | 50      | -            |
| MLH00NI   | 63      | -            |
| MPH00NI   | 75      | upon request |
| MRH00NI   | 80      | -            |
| MTH00NI   | 100     | -            |
| MVH00NI   | 110     | -            |
| MXH00NI   | 125     | -            |
| MZH00NI   | 160     | -            |