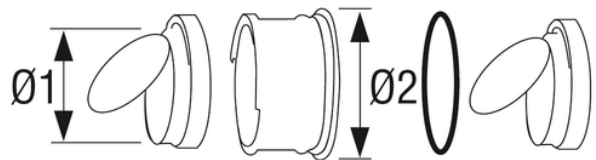
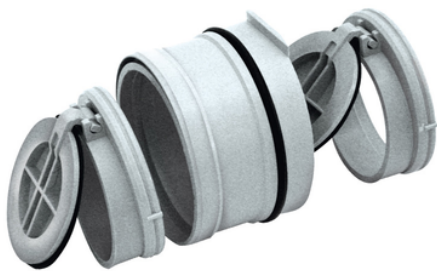


Double flap anti-backflow device

Especially designed for yards, garages cellars and any areas where a high drainage capacity is required.

Material: Polypropylene.

It may be fit in to high capacity floor drains d.100 to prevent back flooding.



| Reference | RAL | Dim (mm) | Ø1 (mm) | Ø2 (mm) |
|-----------|------|----------|---------|---------|
| EDP1104 | 7035 | 110 | 103 | 70 |