

100 Grills "Design" (stainless steel AISI 304)

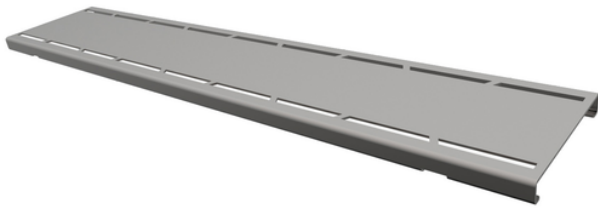
Linear evacuation by superficial drainage channels with grills.

Ideal for long stretches of drainage channel systems for white waters. Thanks to the pellicular patterns engraved on the grills (laser technology), this product is particularly suitable for public showers, changing rooms, gymnasiums and spas.

Material: Stainless steel AISI 304

The "Design" grilles can be classified in load class K3 in accordance with regulation EN 1253 -2 (resistance >300 kg).

All tests have been carried out at Aliaxis laboratories.



Reference	Dim (mm)	l/s	Material
EZ10GLA	100x500	0,8	Inox