

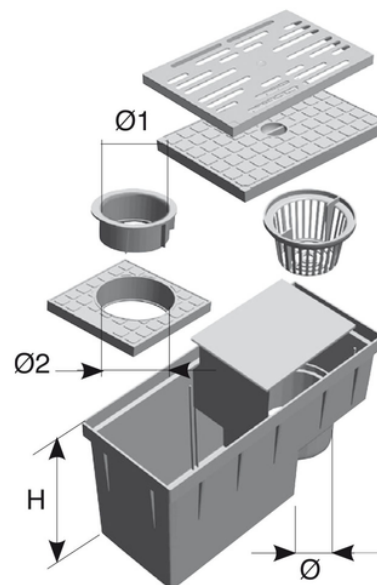
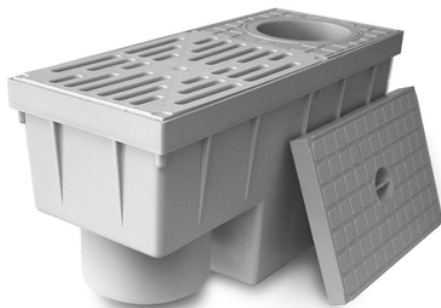
PP Trapped rainwater gully round inlet vertical outlet

Pavements, grass or paved walkways: to use as trapped inspection chamber for rain water flowing from gutter downpipes to the sewage. Tested by CSTB. Flow rate in accordance with regulation EN 1253-1 par 8.11. Material: Polypropylene.

Benefits:

- light-weight
- easier installation than concrete version
- fully injection moulded - high durability
- leaves basket
- Internal removable baffle plate
- available with round inlet \varnothing : 80/100 or \varnothing 75/90/110
- vertical outlet \varnothing 100 and \varnothing 110.

Installation: a concrete floor seating is recommended.



Reference	RAL	H (mm)	\varnothing (mm)	$\varnothing 1$ (mm)	A x B (mm)	$\varnothing 2$ (mm)	l/s
Y661304	7035	197	100	80	380X156	100	0,9-1,4
Y662204	7035	197	110	75/90	380X156	110	0,8-1,4
Y663304	7035	197	110	80	380X156	100	0,9-1,4